

SCRAPE / SEDIMENT REMOVAL MATERIAL PLACEMENT LOCATION

SCRAPE / SEDIMENT REMOVAL DESIGN TABLE

SCRAPE ID #	RANDOM FILL	WAVE BERM / SLOPE FILL	DITCH FILL	SALVAGE TOPSOIL	ADJACENT UPLANDS

(A) AVERAGE LENGTH (FEET)	(B) AVERAGE WIDTH (FEET)	(C) AVERAGE EXCAVATION DEPTH (FEET)	(D) AVERAGE SIDE SLOPE (FEET)	EXCAVATED MATERIAL (C.Y.)

* FILL IN THE TABLE WITH EITHER AN "X" AND/OR THE MATERIAL PLACEMENT DESCRIPTION AND/OR SHEET # FOR THE LOCATION OF THE EXCAVATED MATERIAL PLACEMENT. THE LOCATION OF THE MATERIAL PLACEMENT MAY VARY AND MAY BE PLACED IN MORE THAN ONE LOCATION PER SCRAPE / SEDIMENT REMOVAL. IF THERE ARE NO CELLS ARE FILLED IN, THEN THE EXCAVATED MATERIAL SHALL BE PLACED ON ADJACENT UPLANDS OR OTHERWISE DIRECTED BY ENGINEER.

* THE LENGTHS, WIDTHS, DEPTHS, AND SLOPES PROVIDED ARE AVERAGES. DIMENSIONS MAY VARY. (SEE CONSTRUCTION REQUIREMENTS BELOW).

MATERIAL PLACEMENT REQUIREMENTS

MATERIAL PLACEMENT:
 CONTRACTOR SHALL PLACE EXCAVATED SCRAPE / SEDIMENT REMOVAL MATERIAL IN LOCATIONS AS SHOWN IN MATERIAL PLACEMENT TABLE, DRAWINGS, OR AS OTHERWISE DIRECTED BY ENGINEER. UNLESS OTHERWISE SPECIFIED THE MATERIAL PLACEMENT AREAS SHALL BE WELL GRADED, AND CONFORM TO EXISTING TOPOGRAPHY OR AS OTHERWISE DIRECTED BY ENGINEER.

LOCATION	DESCRIPTION
RANDOM FILL	PLACEMENT OF EXCAVATED SCRAPE / SEDIMENT REMOVAL MATERIAL FOR RANDOM FILL SHALL BE TO DIMENSIONS SHOWN IN DRAWINGS OR OTHERWISE DIRECTED BY ENGINEER.
WAVE BERM / SLOPE FILL	PLACEMENT OF EXCAVATED SCRAPE / SEDIMENT REMOVAL MATERIAL FOR WAVE BERM / SLOPE FILL SHALL BE TO DIMENSIONS SHOWN IN DRAWINGS OR OTHERWISE DIRECTED BY ENGINEER.
DITCH FILL	PLACEMENT OF EXCAVATED SCRAPE / SEDIMENT REMOVAL MATERIAL FOR DITCH FILL SHALL BE TO DIMENSIONS SHOWN IN DRAWINGS OR OTHERWISE DIRECTED BY ENGINEER.
SALVAGE TOPSOIL	TOPSOIL IS TO BE STRIPPED, STOCK PILED, AND THEN PLACED / GRADED BACK INTO THE EXCAVATED SCRAPE AREA. TOPSOIL STRIPPING DEPTHS SHALL BE 4 TO 6 INCHES UNLESS OTHERWISE DIRECTED BY ENGINEER.
ADJACENT UPLANDS	ANY EXCESS EXCAVATED MATERIALS SHALL BE PLACED ON ADJACENT UPLANDS SHALL BE WELL GRADED, AND CONFORM TO EXISTING TOPOGRAPHY, UNLESS OTHERWISE DIRECTED BY ENGINEER.

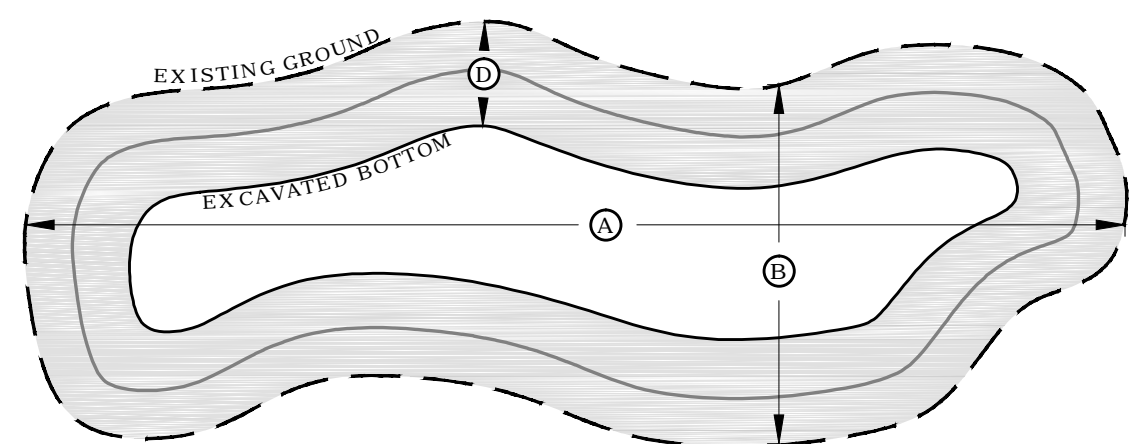
CONSTRUCTION REQUIREMENTS

WETLAND SCRAPE / SEDIMENT REMOVAL:

- THE PROJECT ENGINEER OR THE ENGINEER'S REPRESENTATIVE MAY CHANGE THE DEPTH, SLOPE, SHAPE, SIZE, OR LOCATION OF THE EXCAVATION AT THEIR DISCRETION.
- THE FINISHED SHAPE OF THE EXCAVATION SHALL BE IRREGULAR AS SHOWN.
- THE FINISHED SURFACE OF THE EXCAVATION SHALL BE ROUGH (NOT GRADED SMOOTH).

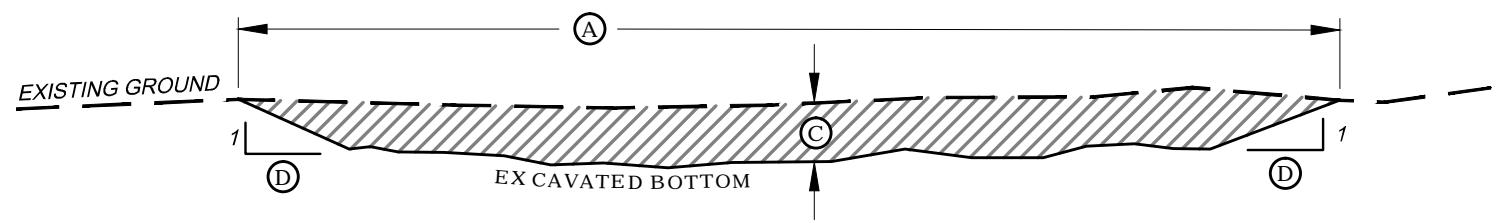
FINAL QUANTITIES AND PAYMENT:

- EXCAVATION QUANTITIES WILL BE FIELD VERIFIED / MEASURED FOR PAYMENT UPON COMPLETION OF THE EXCAVATION. PLACEMENT REQUIREMENTS (LOCATION) SHALL BE INCIDENTAL TO SCRAPE / SEDIMENT REMOVAL.
- THE VOLUME (C.Y.) SHOWN FOR EACH EXCAVATION IS THE MAXIMUM QUANTITY ALLOWABLE FOR PAYMENT WITHOUT PRIOR APPROVAL FOR AN INCREASE FROM THE ENGINEER.
- UNLESS OTHERWISE SPECIFIED THE PLACEMENT OF ALL EXCAVATED MATERIALS SHALL BE INCIDENTAL TO THE COST OF THE EXCAVATION (I.E., NOT A PAY ITEM).




PLANVIEW OF SCRAPE / SEDIMENT REMOVAL

NOT TO SCALE



PROFILE OF SCRAPE / SEDIMENT REMOVAL

NOT TO SCALE

I HEREBY CERTIFY THAT THIS PLAN, SPECIFICATION, OR REPORT WAS PREPARED BY ME OR UNDER MY DIRECT SUPERVISION AND THAT I AM A DULY LICENSED PROFESSIONAL ENGINEER UNDER THE LAWS OF THE STATE OF MINNESOTA. PRINT NAME : _____ SIGNATURE : _____ LICENSE # : _____ DATE : _____	<i>WETLAND RESTORATION PLAN</i>		 BWSR STANDARD SHEET # BWSR-104
	<i>SCRAPE / SEDIMENT REMOVAL DETAIL SHEET</i>		
	APPROVED BY: _____	DATE: _____	
	PROJECT #: _____	COUNTY: _____	
	PLAN SHEET OF _____		